

APM489-48 Moving Coil Meter

Moving coil meters are suitable for measurement of DC current or voltage. All meters have a jewel and pivot movement which ensures reliability and Accuracy.

Technical Specifications

Input - Current

0-50uA to 0-40A direct connected

APM489-48 25A maximum direct

> 0-40A use shunt and mV Voltmeter

4-20 mA

Can be driven from a transducer output

Input - Voltage

0-50mV to 0-800V Direct connected

APM489-48 500V Maximum

Display

Scales are linear and calibrated from zero to full scale

scaleplates are available in any process unit including:

A, V, °C, bar, rpm, kW and %

Available in shortscale (90° sweep)

And longscale (240° sweep)

±1.5% max. error

Voltage Drop:

-Ammeter <100mV

Current Consumption:

-Voltmeter <200V 1mA, >200V 200uA

Customer Termination

The customer gains entry at the rear via 2 stud connectors

Panel Fixing Detail

The customers panel cut out hole needs to be 45mm square with the enclosure held into the panel by clamp.

The customers panel must be no more than 12mm thick

Environmental Conditions

Storage Temperature -40 to 70°C

Operating Ambient -15 to 55°C

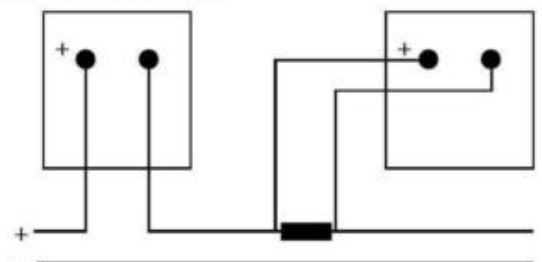


WIRING

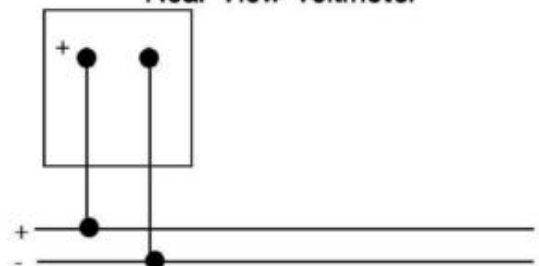
Rear View-Ammeters

Direct connection

Shunt operated



Rear View-Voltmeter



Dimension:

Bezel size: 48 x 48 mm

Cutout Size: 45 x 45 mm

Depth: 83 mm Including terminal cover

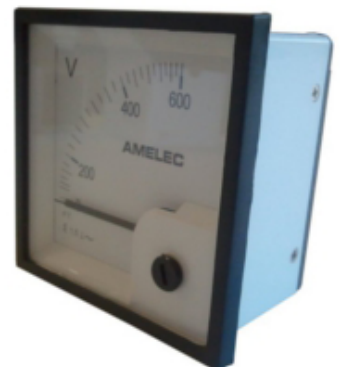
63 mm including terminals (no cover)

Note:-

Unit should only be removed from its enclosure from the front.

APM489-72 Moving Coil Meter

Moving coil meters are suitable for measurement of DC current or voltage. All meters have a jewel and pivot movement which ensures reliability and Accuracy.



Technical Specifications

Input - Current

0-50uA to 0-40A direct connected
> 0-40A use shunt and mV Voltmeter
4-20 mA
Can be driven from a transducer output

Input - Voltage

0-50mV to 0-800V Direct connected

Display

Scales are linear and calibrated from zero to full scale

scaleplates are available in any process unit including:

A, V, °C, bar, rpm, kW and %

Available in shortscale (90° sweep)

And longscale (240° sweep)

±1.5% max. error

Voltage Drop:

-Ammeter <100mV

Current Consumption:

-Voltmeter <200V 1mA, >200V 200uA

Customer Termination

The customer gains entry at the rear via 2 stud connectors

Panel Fixing Detail

The customers panel cut out hole needs to be 68mm square with the enclosure held into the panel by clamp.

The customers panel must be no more than 10 mm thick

Environmental Conditions

Storage Temperature -40 to 70°C

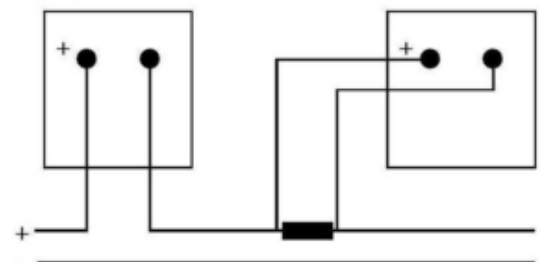
Operating Ambient -15 to 55°C

WIRING

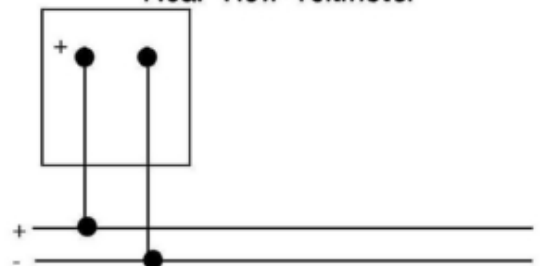
Rear View-Ammeters

Direct connection

Shunt operated



Rear View-Voltmeter



Dimension:

Bezel size: 72 x 72 mm

Cutout Size: 68 x 68 mm

Depth: 60 mm Including terminals

Note:-

Unit should only be removed from its enclosure from the front.

APM489-96 Moving Coil Meter

Moving coil meters are suitable for measurement of DC current or voltage. All meters have a jewel and pivot movement which ensures reliability and Accuracy.

Technical Specifications

Input - Current

0-50 μ A to 0-40A direct connected
> 0-40A use shunt and mV Voltmeter
4-20 mA
Can be driven from a transducer output

Input - Voltage

0-50mV to 0-800V Direct connected

Display

Scales are linear and calibrated from zero to full scale
scaleplates are available in any process unit including:
A, V, °C, bar, rpm, kW and %
Available in shortscale (90° sweep)
And longscale (240° sweep)
 $\pm 1.5\%$ max. error

Voltage Drop:

-Ammeter <100mV

Current Consumption:

-Voltmeter <200V 1mA, >200V 200 μ A

Customer Termination

The customer gains entry at the rear via 2 stud connectors

Panel Fixing Detail

The customers panel cut out hole needs to be 92mm square with the enclosure held into the panel by clamp.
The customers panel must be no more than 9 mm thick

Environmental Conditions

Storage Temperature -40 to 70°C

Operating Ambient -15 to 55°C

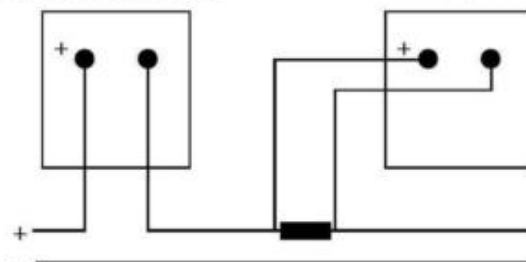


WIRING

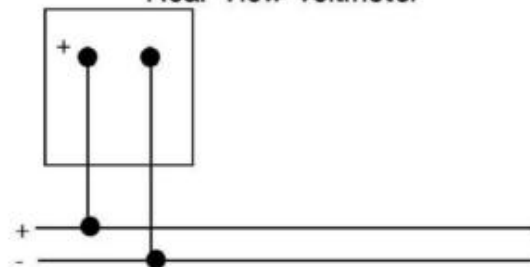
Rear View-Ammeters

Direct connection

Shunt operated



Rear View-Voltmeter



Dimension:

Bezel size: 96 x 96 mm

Cutout Size: 92 x 92 mm

Depth: 66 mm Including terminals

Note:-

Unit should only be removed from its enclosure from the front.