

BS3 DC LINEAR SOLENOID

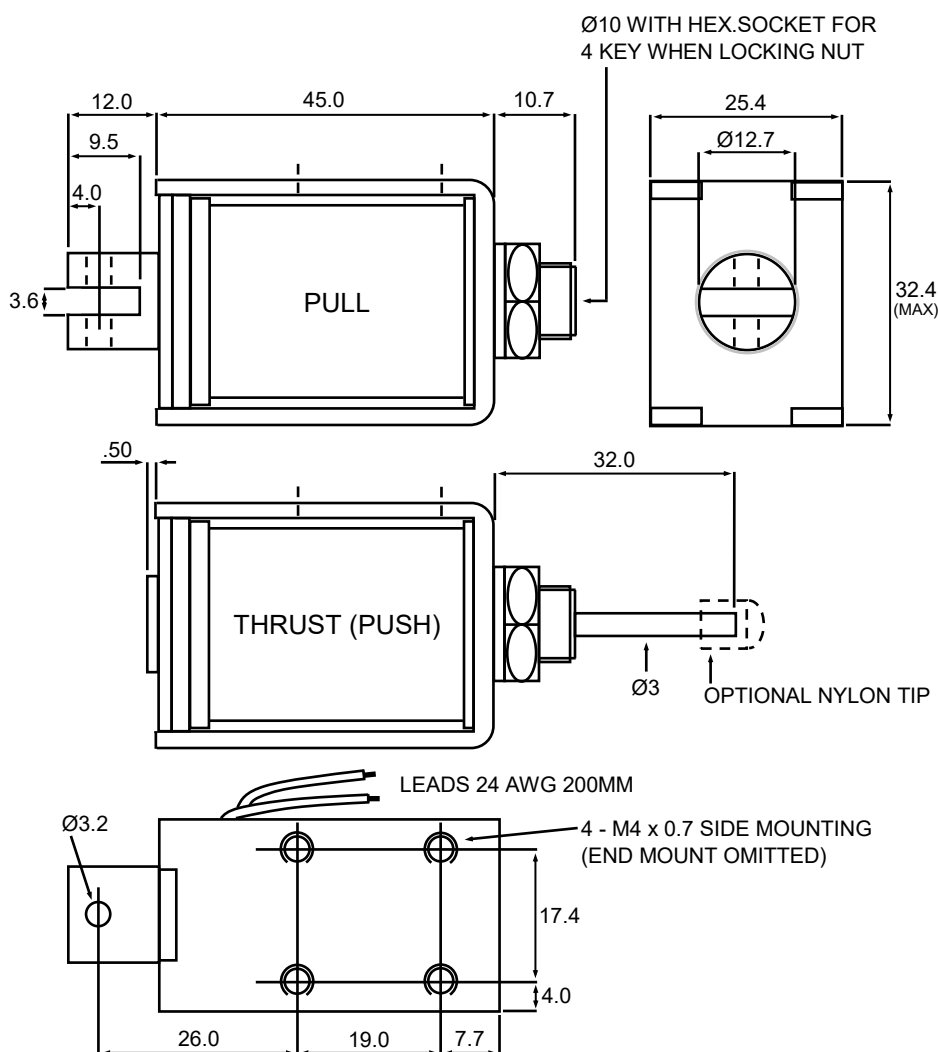
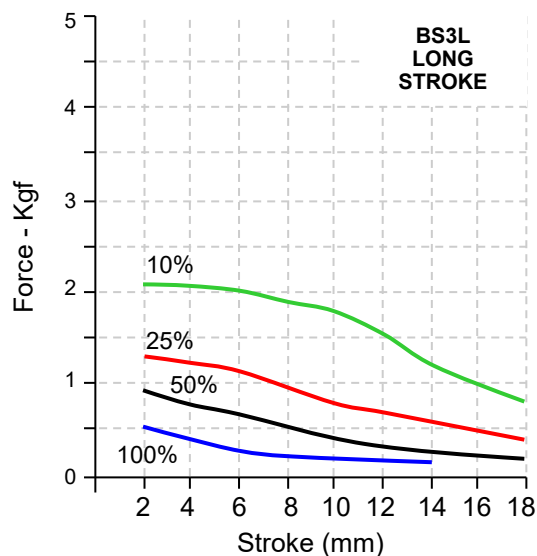
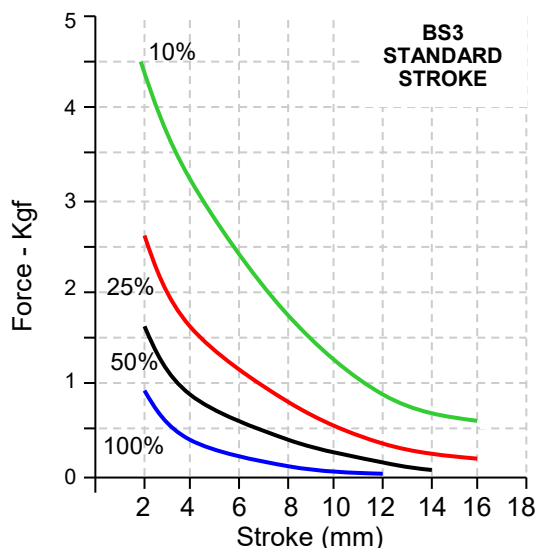
Availability

DC Standard Stroke
PULL - THRUST - PULL & THRUST
DC Long Stroke - PULL

**Solenoid shown in
energised position**

Weight complete 192g approx
Plunger weight 37g max

Forces shown are at
working temperature



DIMENSIONS IN MM

DC Watts

100% Rt_g = 8W

50% Rt_g = 16W

25% Rt_g = 32W

10% Rt_g = 80W

**** Please note: Fixing, plunger coupling, thrust rods and lead length can all be customised ****
We reserve the right to alter or amend designs without prior notice.

HE & BS Benson Ltd

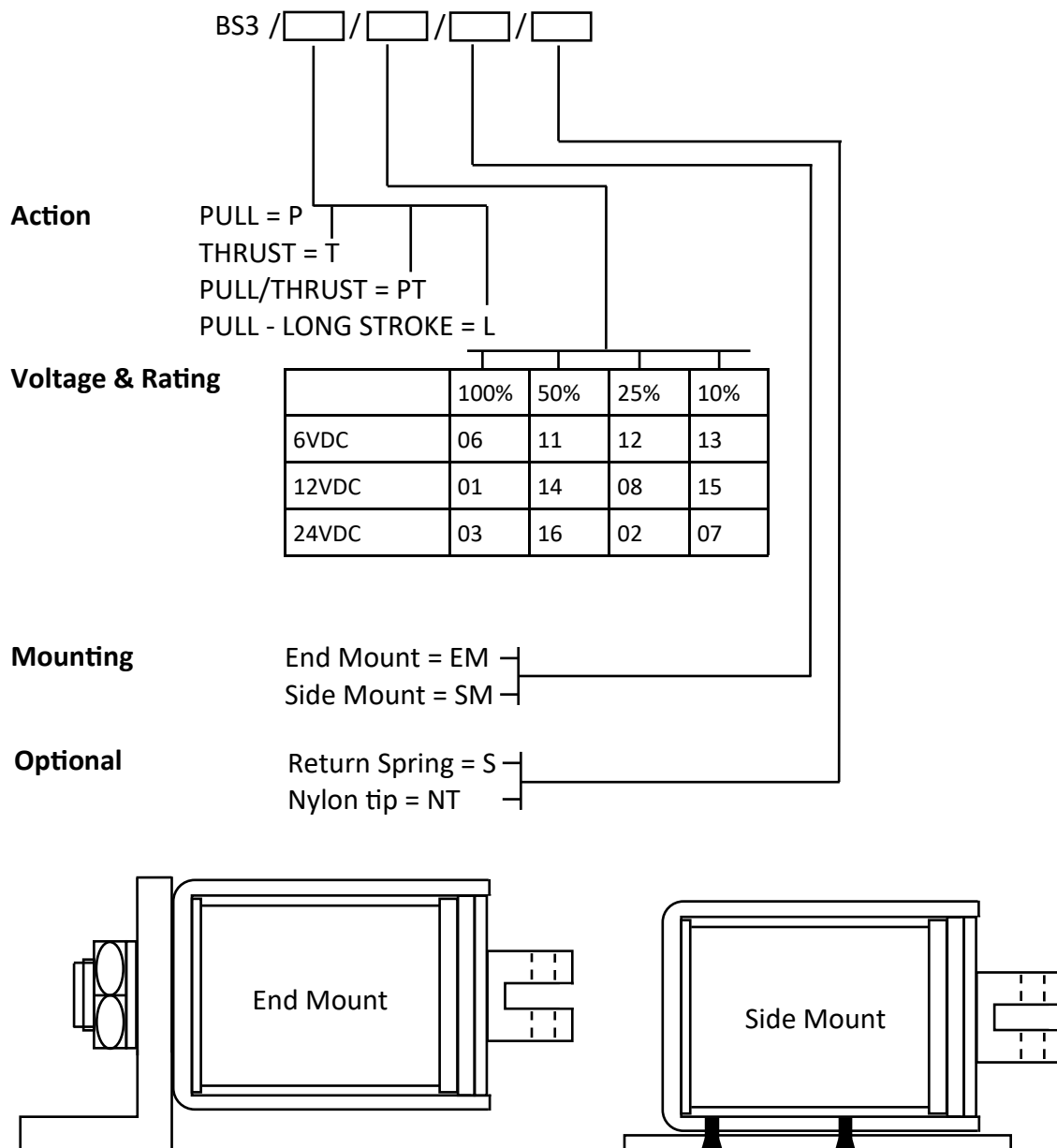
1 Laureate Industrial Estate, Exning Road, Newmarket, Suffolk UK CB8 0AR

+44(0)1638 663535 — 663130 ✉ sales@bensonsolenoids.co.uk 🌐 www.bensonsolenoids.co.uk

BS3 Rev 4 - 2022

CODING

Please use the standard coding below when advising your design requirement.



Example - BS3 / P / 03 / SM / S

Other voltages are available on request.

Fixing, plunger coupling, thrust rods and lead length can all be customised.

All solenoids come with flying leads as standard, should you require spade connectors please contact our sales team.

We reserve the right to alter or amend designs without prior notice.

HE & BS Benson Ltd

1 Laureate Industrial Estate, Exning Road, Newmarket, Suffolk UK CB8 0AR

+44(0)1638 663535 — 663130 ✉ sales@bensonsolenoids.co.uk 🌐 www.bensonsolenoids.co.uk

BS3 Rev 3 - 2019