

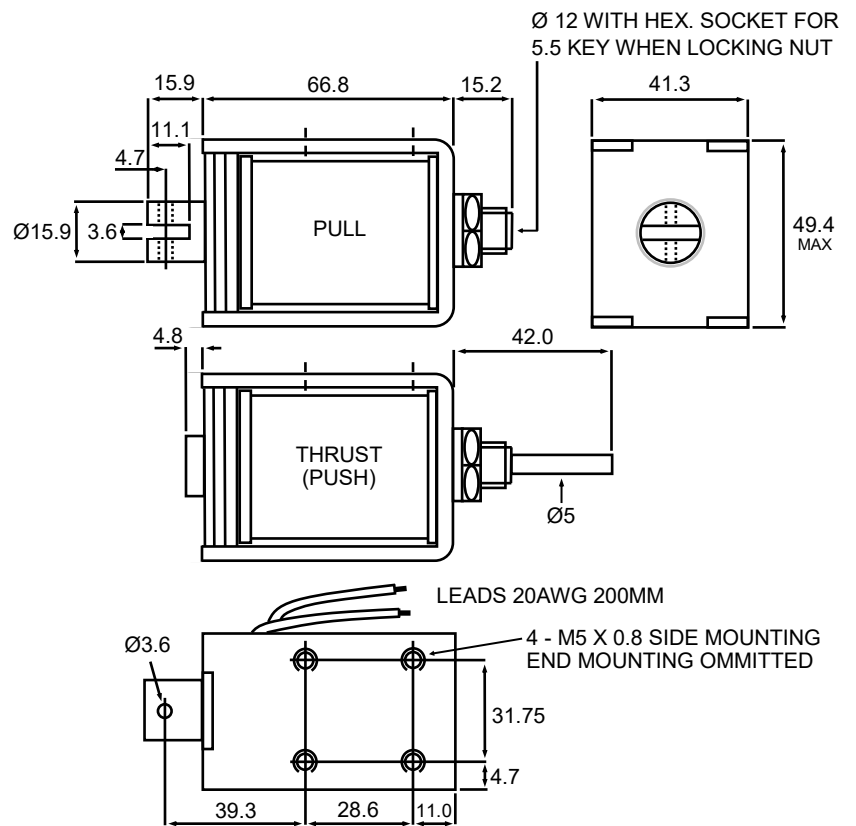
## BS5 DC LINEAR SOLENOID

**Availability**  
DC Standard Stroke  
PULL - THRUST - PULL & THRUST  
DC Long Stroke

**Solenoid shown in energised position**

Weight complete 590g approx  
Plunger weight 95g max

Forces shown are at working temperature



DIMENSIONS IN MM

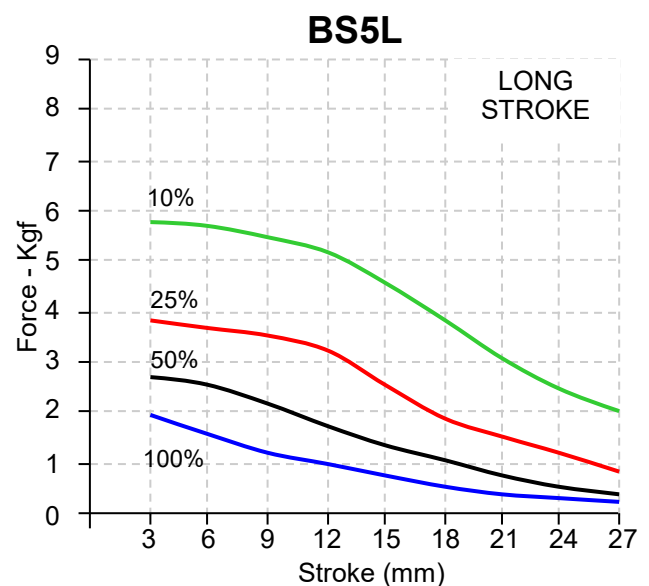
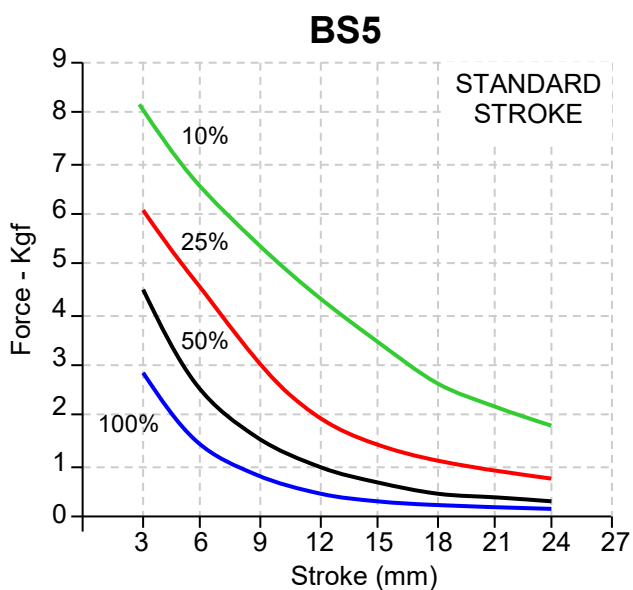
### DC Watts

100% Rtg = 16W

50% Rtg = 32W

25% Rtg = 64W

10% Rtg = 160W



**\*\* Please note: Fixing, plunger coupling, thrust rods and lead length can all be customised \*\***  
We reserve the right to alter or amend designs without prior notice.

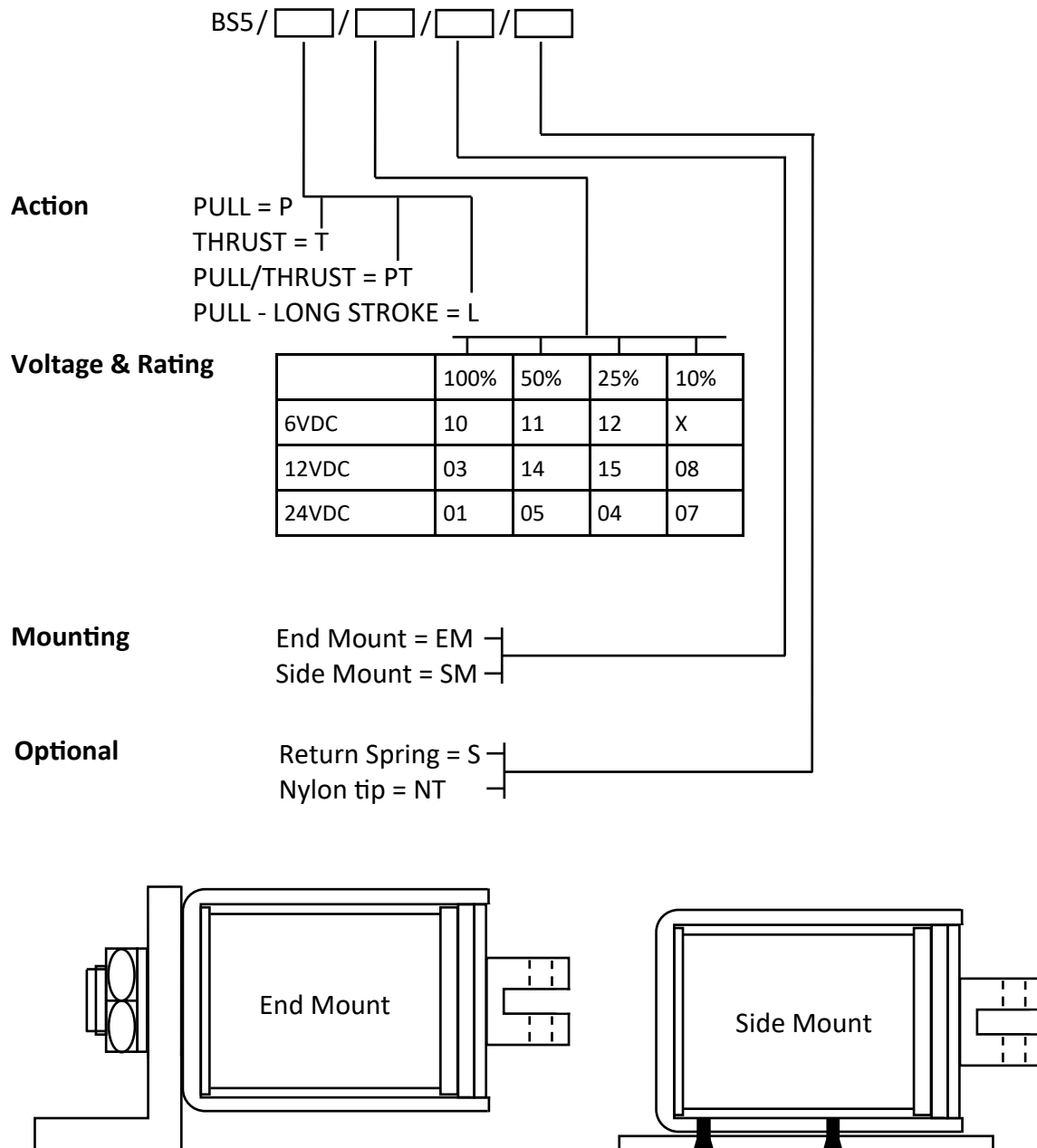
**HE & BS Benson Ltd**

1 Laureate Industrial Estate, Exning Road, Newmarket, Suffolk UK CB8 0AR

+44(0)1638 663535 — 663130 ✉ sales@bensonsolenoids.co.uk 🌐 www.bensonsolenoids.co.uk

## CODING

Please use the standard coding below when advising your design requirement.



Example - BS5 / P / 03 / SM / S

Other voltages are available on request.

Fixing, plunger coupling, thrust rods and lead length can all be customised.

All solenoids come with flying leads as standard, should you require spade connectors please contact our sales team.

*We reserve the right to alter or amend designs without prior notice.*

**HE & BS Benson Ltd**

1 Laureate Industrial Estate, Exning Road, Newmarket, Suffolk UK CB8 0AR

+44(0)1638 663535 — 663130 ✉ sales@bensonsolenoids.co.uk 🌐 www.bensonsolenoids.co.uk

BS5 Rev 3 - 2019