

# STEALTH<sup>®</sup> Gravity Metal Detector



## OVERVIEW:

Stealth Gravity metal detectors are custom manufactured to suit any gravity application. The Stealth uses digital signal processing technology and has high sensitivity levels to ensure the detection of the smallest ferrous, non-ferrous and stainless steel contaminants. The built-in data collection software with standard USB data transfer establishes the Stealth as an effective critical control point complying with stringent HACCP regulations and auditor requirements.

## THE FORTRESS ADVANTAGE:

- **"Never Obsolete"** Commitment: detectors are always supported with parts and services
- Standard electronics configuration across product line allowing easy support and trouble shooting
- Modular design; have fewer components
- Custom built detectors or stock sizes
- **Simple Operation, Outstanding Reliability, Exceptional Performance**

## KEY FEATURES:

- Contact Reporter Software Included
- Detailed USB Data Collection
- Digital Signal Processing Technology
- Ultra Sensitive Detection
- AutoTest: Self Diagnostic Testing
- FDA Approved Anti-Static Product Tube
- Easy "Fast" Calibration
- Flash Memory Stability
- Multi-Level Password Protection
- USB Updatable Firmware

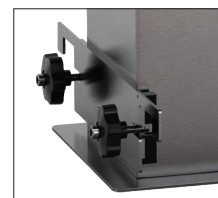
## APPLICATIONS:

- Flour
- Rice
- Cereals
- Powders/Grains
- Corn
- Sugar
- Confectionery
- Chemicals
- Nuts

*Don't See Your Application? Please Contact Us!*

## AVAILABLE ADD-ONS:

- Test Sample Retrieval Drawer
- **HALO**  
Automatic Testing System



# STEALTH<sup>®</sup> Gravity Metal Detector

Custom Pipe Diameters  
or Stock Sizes  
(76.2mm, 152.4mm, 203.2mm)

Powerful Digital Signal  
Processing (DSP) Technology

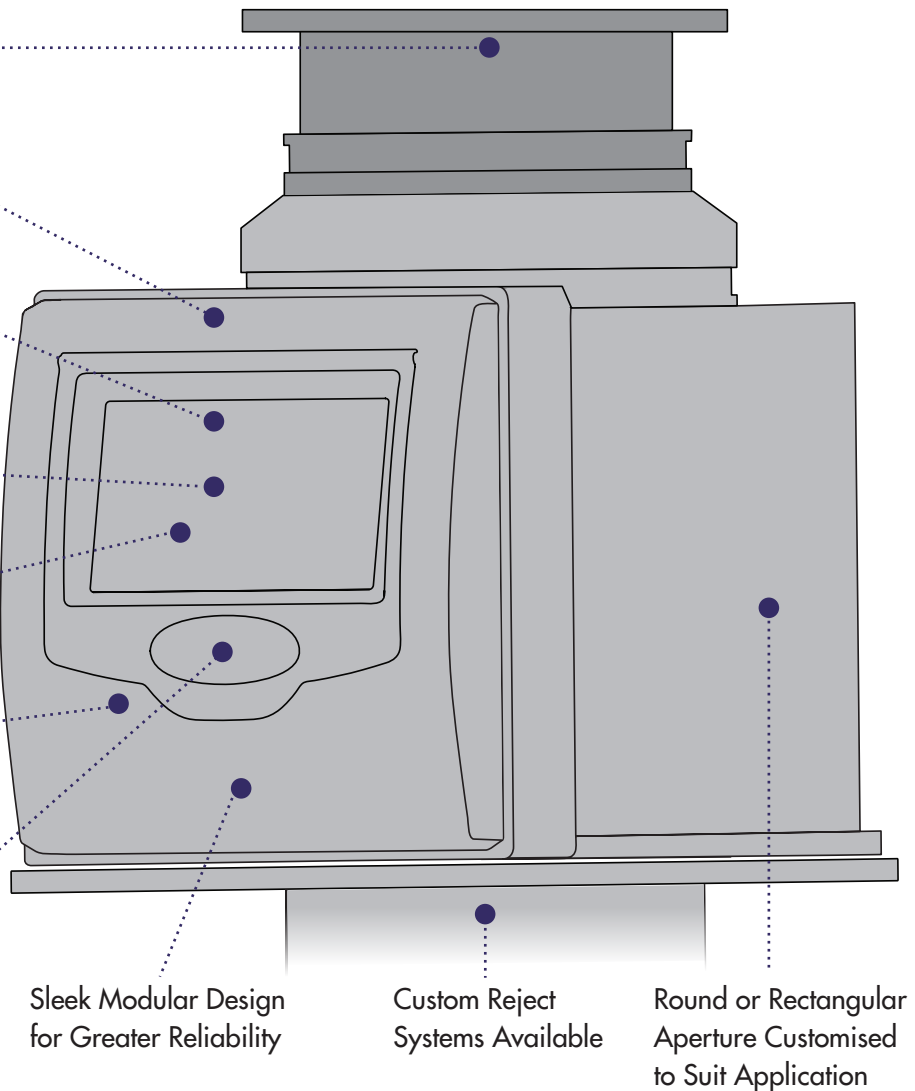
Product Library Stores  
Multiple Product Settings  
for Easy Recall

Multi-Level Password  
Protection

User-Friendly  
Multi-Language Control  
Panel Interface

Automatic QA Testing  
and Calibration

USB Port for Access to  
QA Reports,  
Configuration and  
Firmware Updates



Sleek Modular Design  
for Greater Reliability

Custom Reject  
Systems Available

Round or Rectangular  
Aperture Customised  
to Suit Application

## DETECTOR OPTIONS & SPECIFICATIONS:

Metal Detector Construction	Durable STEEL-IT Epoxy Painted Aluminum or Stainless Steel
Control Panel Configuration	Integral Control Panel, Redundant Multi-Panel Control, Multi-unit (single panel) Control remote
Reject System	Stainless Steel Flap-gate or Cowbell Diverter Reject Systems (rollout/easy clean option available)
Alarms & Fail-safe System	Audible/Visual Alarms & Fail-safe diverts to reject during power/air pressure failure
System Monitoring	Reject Confirmation/Position Sensor, Air Pressure Sensors
Product Tube	Food Grade Anti-static UHMWPE (BFM and other options available)
Ingress Protection	Aluminum: Nema 4/IP65 or Stainless Steel: Nema 4X/IP69K
Hazardous Location Ratings	IECEX, CSA: Class 2 Division I, Class 2 Division II
Network Communication	Ethernet via Contact Manager Software, Ethernet/IP, OPC UA
Electrical Requirement	100-240v Single phase, 1amp, 50-60Hz
Air Pressure Requirement	65-90psi (4-5bar) @ 2CFM required for Reject System (capacity tanks available)

Simple Operation. Outstanding Reliability. Exceptional Performance.

**FORTRESS**<sup>®</sup>  
TECHNOLOGY

Copyright © 2018 Fortress Technology Inc. All rights reserved. Patent Pending. The information, designs and artwork contained in this document are confidential and may not be disseminated, distributed or copied without written consent from Fortress Technology Inc. Specifications, designs, features and technology subject to change without notice.